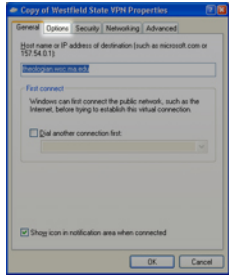
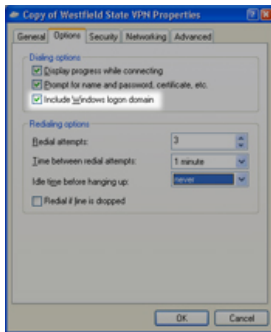




12. Before the first time you connect, click on "Properties."



13. Click on "Options."



14. Check off "Include Windows Logon Domain." Click OK.



10. Enter your Username and Password and ADS for the Domain.

**WESTFIELD STATE COLLEGE  
DIVISION OF INFORMATION  
TECHNOLOGY**

## Setting Up Your VPN Internet Connection for Windows XP



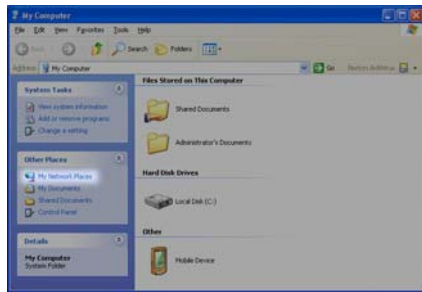
**WESTFIELD STATE COLLEGE  
DIVISION OF INFORMATION TECHNOLOGY**

Wilson Hall Room 105  
Helpdesk: 4357

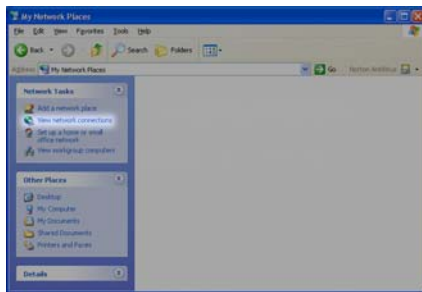
**Helpdesk: 4357**



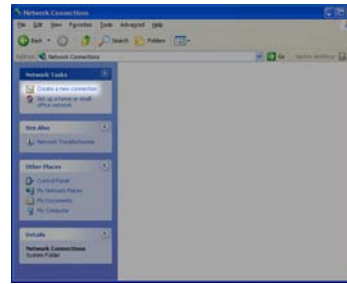
1. Click the "Start" button, then click on "My Computer."



2. Click on "My Network Places" on the left menu under the heading "Other Places."



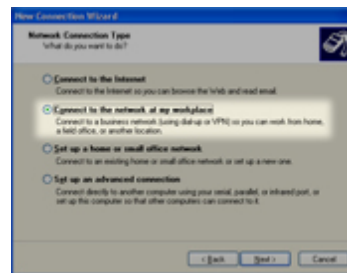
3. Click on "View Network Connections" on the left menu under the heading "Network Tasks."



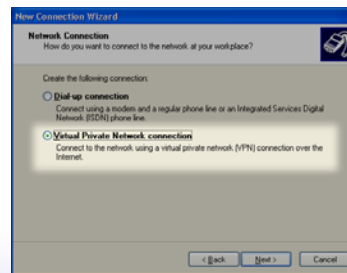
4. Click on "Create a New Connection" on the left menu under the heading "Network Tasks."



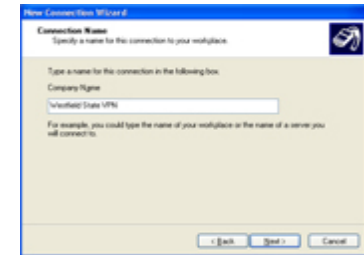
5. Click "Next" on the "New Connection Wizard" welcome screen.



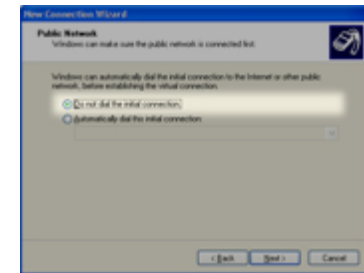
6. Select "Connect to the network at my workplace" and click "Next."



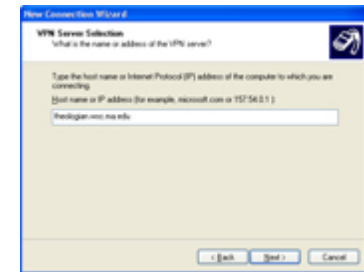
7. Select "Virtual Private Network connection" and click "Next."



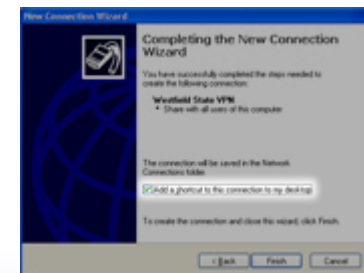
8. Enter "Westfield State College VPN" as the connection Name and click "Next."



9. Select "Do not dial the initial connection" and click "Next."



10. Enter "theologian.wsc.ma.edu" as the VPN Server host name and click "Next."



11. If you want a shortcut on your desktop, put a check mark in the "Add a shortcut to this connection on my desktop." Click Finish.